

**Rural Municipality of Lumsden No.189**

**Bylaw No. 9-2013**

A bylaw to amend Bylaw No. 7 - 2012 known as the Zoning Bylaw of the Rural Municipality of Lumsden No. 189.

The Council of the Rural Municipality of Lumsden No 189, in the Province of Saskatchewan, enacts this bylaw to amend Bylaw No. 7 - 2012 as follows:

1. **Section 5.0 ZONING DISTRICTS** section 5.1.1 is amended by deleting the following from the list of Districts and Symbols:  
"Industrial – M1"
2. **Section 17.0 – M1 – INDUSTRIAL DISTRICT** is deleted in its entirety.
3. The **Zoning District Map** referred to in Section 5.2.1 is amended:
  - a. By rezoning a portion of the NE ¼ Sec 18 – 19 -20 W2M from M1 – Industrial District (by Contract) to M – Industrial District, specifically including the land contained in:
    - Plan 102105773
    - Plan 102095647
    - Parcel C, Plan 101200699
 as shown in bold outline on the map attached as Schedule "A" which forms a part of this bylaw.
4. This bylaw shall become effective on the date of approval of the Minister of Government Relations.

**Readings**

Read a first time this 18<sup>th</sup> Day of July 2013.

Read a second time this 12<sup>th</sup> Day of September 2013.

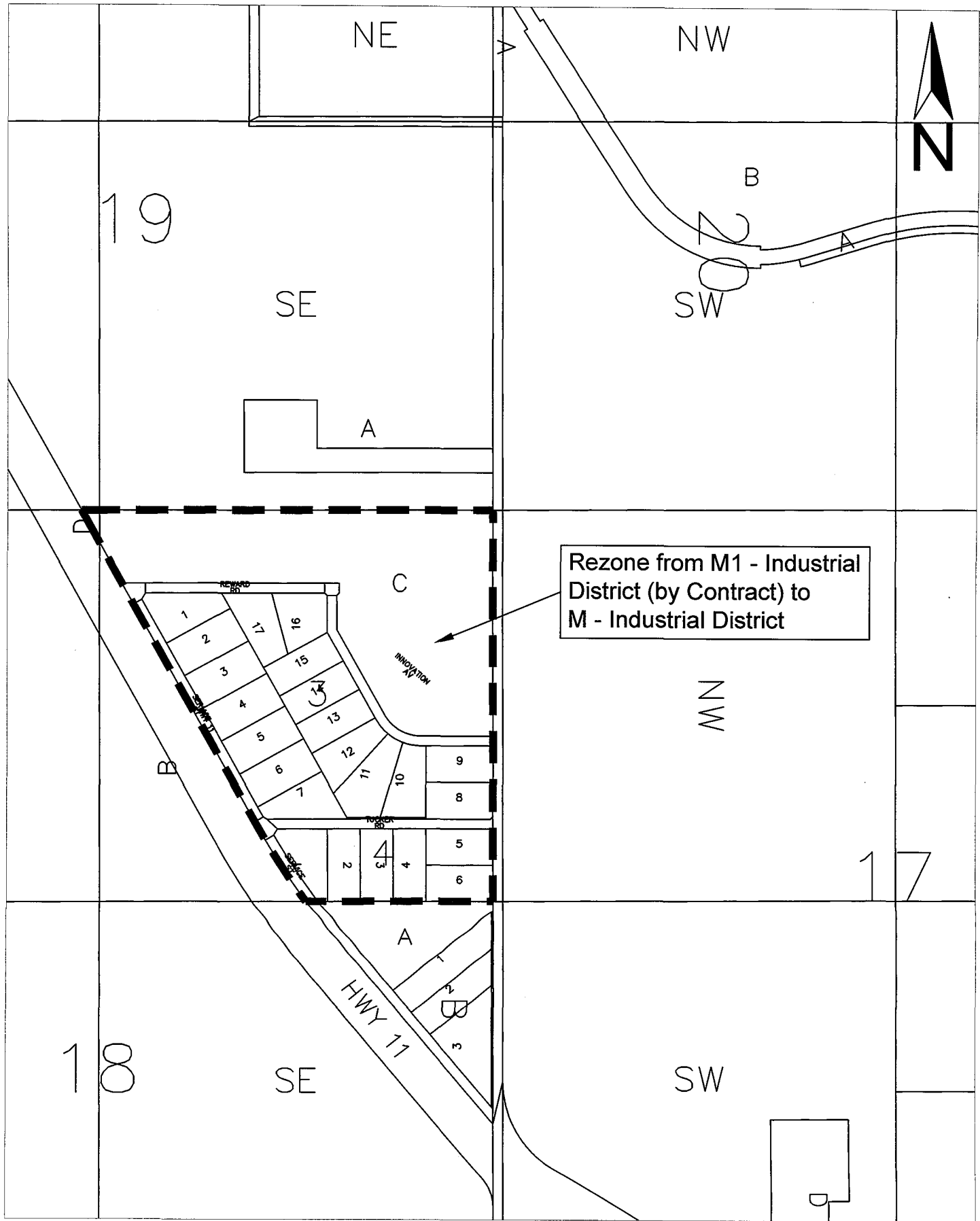
Read a third time this 12<sup>th</sup> Day of September 2013.



*James R. Spitzer*  
Reeve

*Debbie Cooper*  
Chief Administrative Officer

# Schedule "A"





Government  
of  
Saskatchewan

Community Planning



File: RM 189 Bylaws

October 9, 2013

Ms. Darcie Cooper, Administrator  
RM of Lumsden No. 189  
Box 160  
LUMSDEN SK S0G 3C0

Dear Ms. Cooper:

**RE: RM of Lumsden No. 189  
Bylaw Amendments 9-2013, 12-2013, and 13-2013**

I am pleased to inform you that the above noted bylaw amendments for the RM of Lumsden No. 189 have been approved effective October 8, 2013. Enclosed are one copy each of the approved bylaws for your records. I appreciate the time and effort that you and your council have contributed on behalf of your municipality in developing this important document.

If you have any questions please call.

Sincerely,

Amanda J. Brinda  
Planning Consultant

Enclosure

---