

Rural Municipality of Lumsden No.189

Bylaw No. 3-2015

A bylaw to amend Bylaw No. 7 - 2012 known as the Zoning Bylaw of the Rural Municipality of Lumsden No. 189.


The Council of the Rural Municipality of Lumsden No 189, in the Province of Saskatchewan, enacts this bylaw to amend Bylaw No. 7 - 2012 as follows:

1. The Zoning District Map referred to in Section 5.2.1 is amended by rezoning a portion of the NW ¼ Sec 32-19-21-W2M from A – Agriculture District to C2 – Highway Commercial District, as shown within the bold dashed line on the Plan of Proposed Subdivision dated 2015 by Scott Assié, MCIP, RPP, Altus Geomatics, which is attached as Schedule “A” and forms part of this bylaw.
2. This Bylaw will come into force and take effect upon date of final approval by the Minister of Government Relations.

Readings

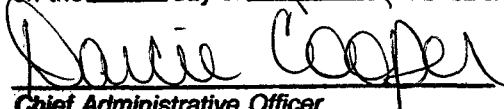
Read a first time this 19th Day of March 2015.
 Read a second time this 23rd Day of April 2015.
 Read a third time this 23rd Day of April 2015.

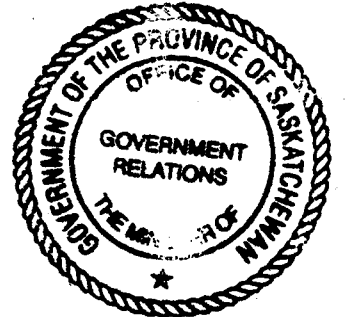



 Reeve


 Chief Administrative Officer

Certified to be a true copy of Bylaw No. 3-2015
 adopted by the Council of the R.M. of Lumsden
 on the 23rd day of April, 2015

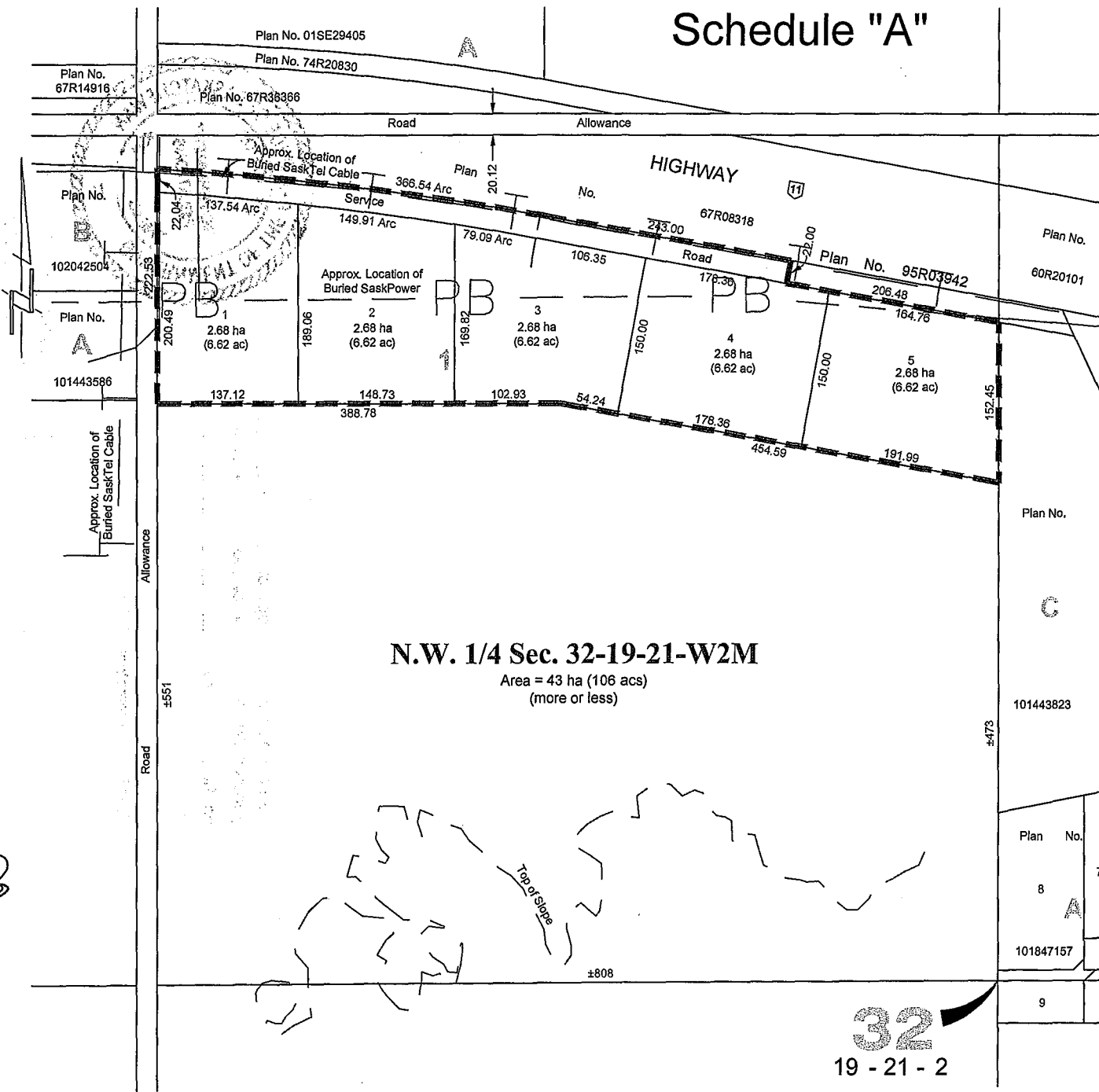

 Chief Administrative Officer



APPROVED
REGINA, SASK.
 JUN 24 2015

 Assistant Deputy Minister
 Ministry of Government Relations

Schedule "A"



PLAN OF PROPOSED SUBDIVISION
 of Part of
Surface Parcel # 202839240
N.W. 1/4 Sec. 32 - Twp. 19 - Rge. 21 - W2Mer.
RM of Lumsden No. 189
Saskatchewan
Scott Assié, MCIP, RPP
2015
Scale 1:4053

OWNER(S):

 Dowalo Holdings Ltd.

Measurements are in metres and decimals thereof.
 Measurements are approximate and may vary by ±10m.
 Area to be approved is outlined in bold dashed line
 and contains 14.73 ha (36.39 acs).

COMMUNITY PLANNING